

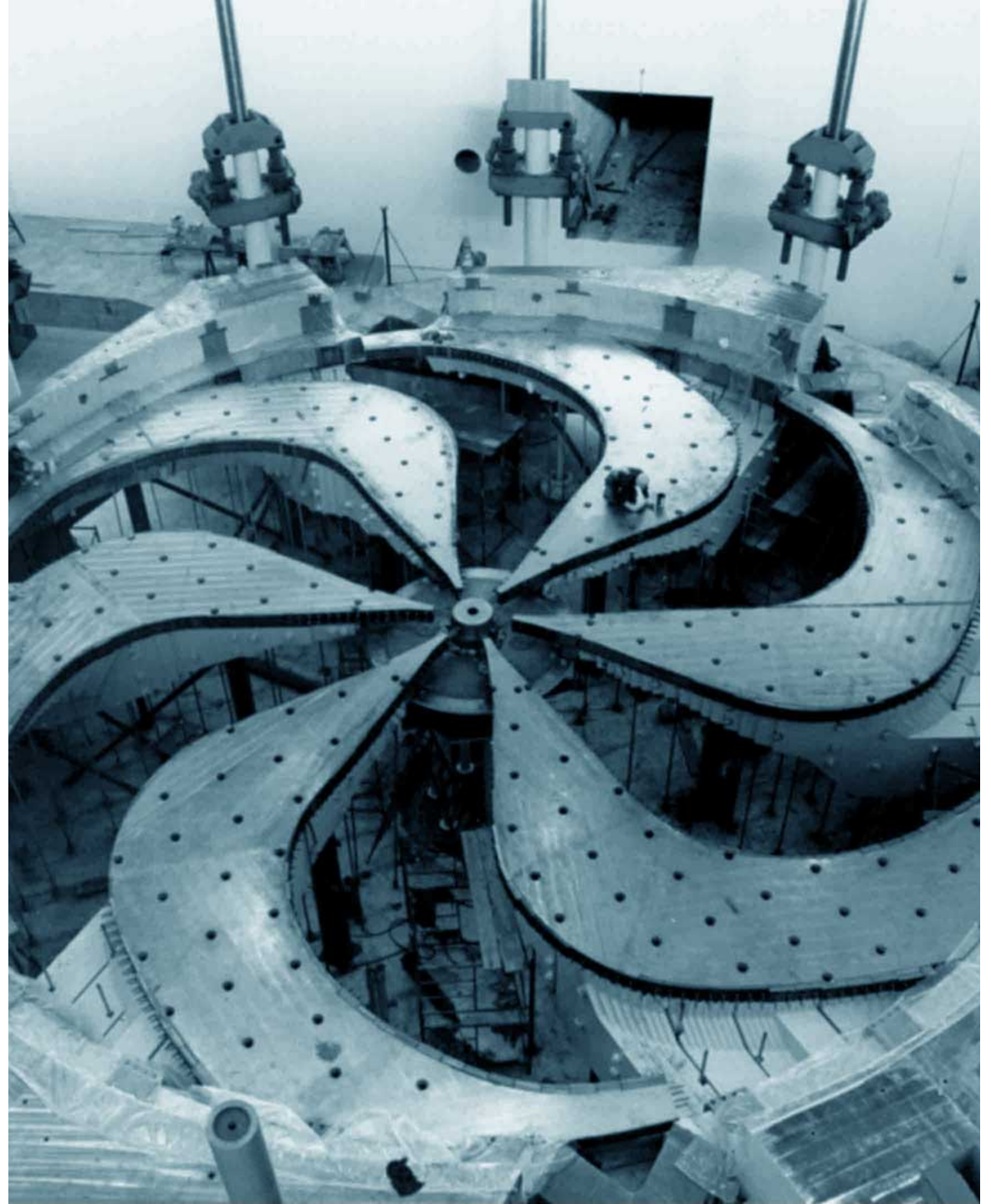
# GAPS Members: Post-COVID

Daniel Yates

Graduate and Postdoc Society (GAPS)

[dyates@triumf.ca](mailto:dyates@triumf.ca)

2020-08-21

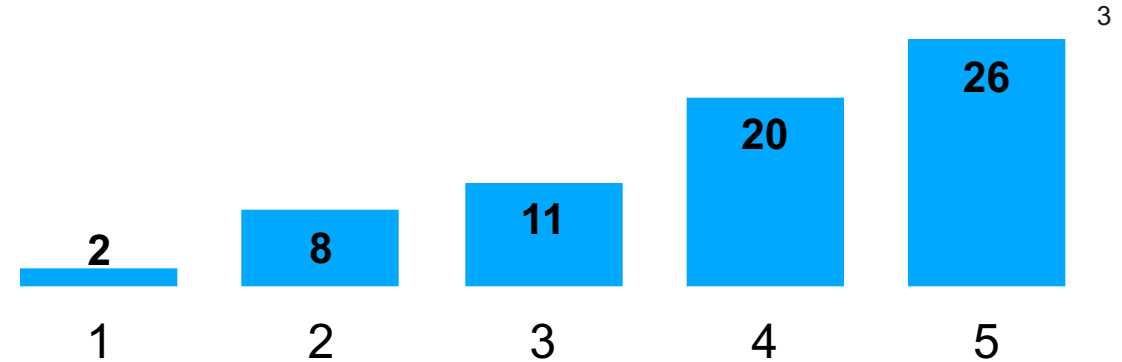


# Purpose

- Post-COVID restart of TRIUMF, returning to site and research
- Gauge feelings of grads and postdocs in community
- Anonymous survey asking about
  - Return to TRIUMF comfortability (N=67)
  - Impact on student thesis (N=36)

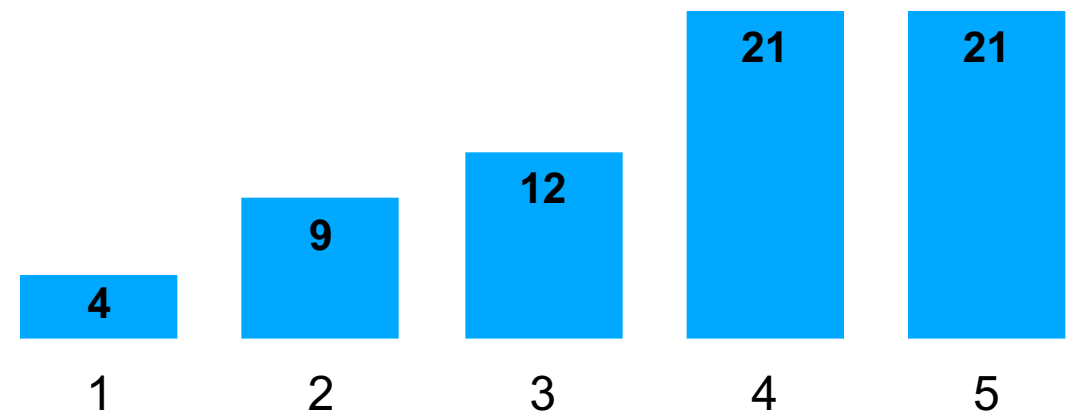
# Return to TRIUMF

- General return to TRIUMF.



Uncomfortable  Comfortable

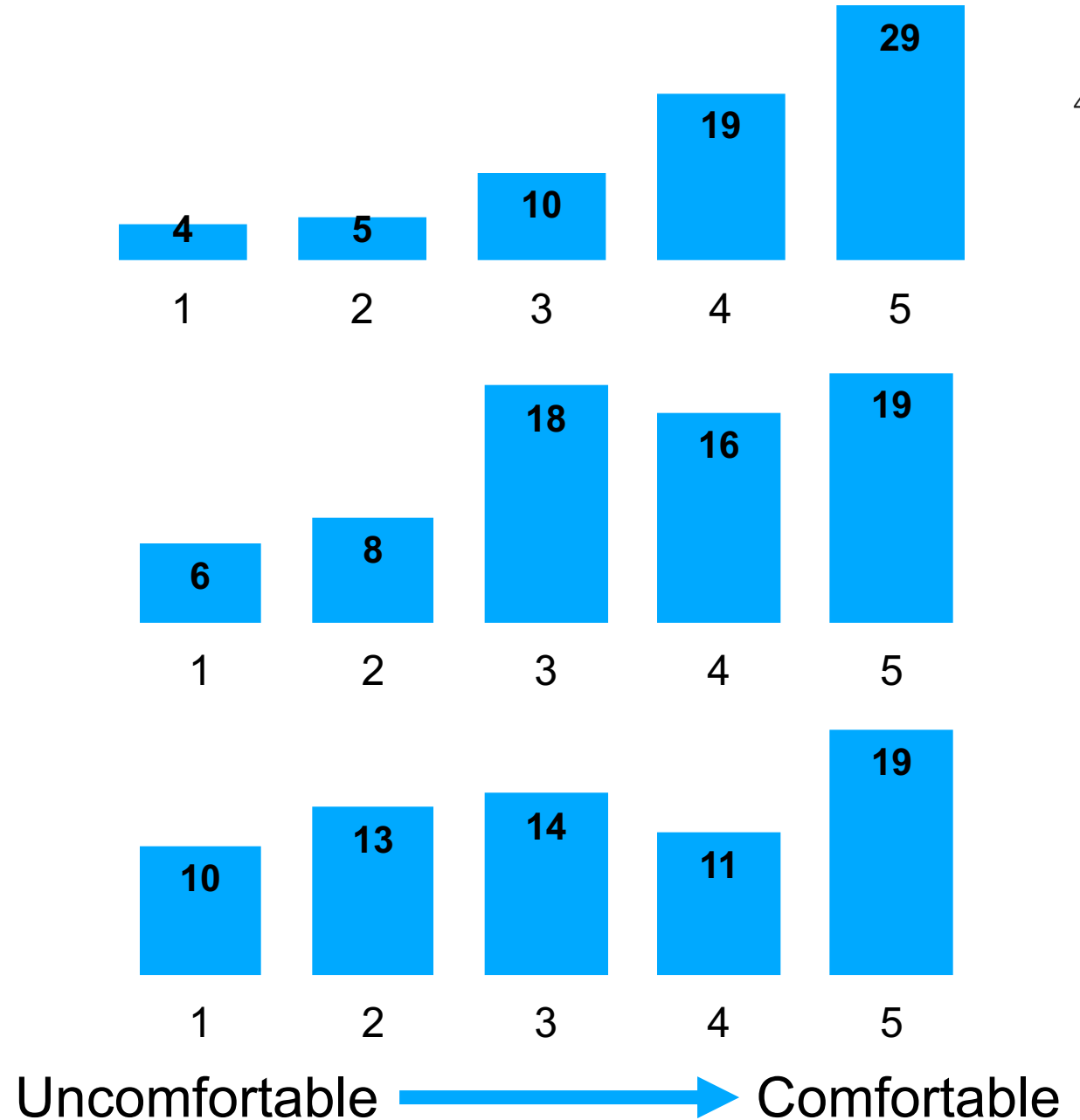
- Shared office space w/ COVID modifications.



# Return to TRIUMF

## Experimental Work

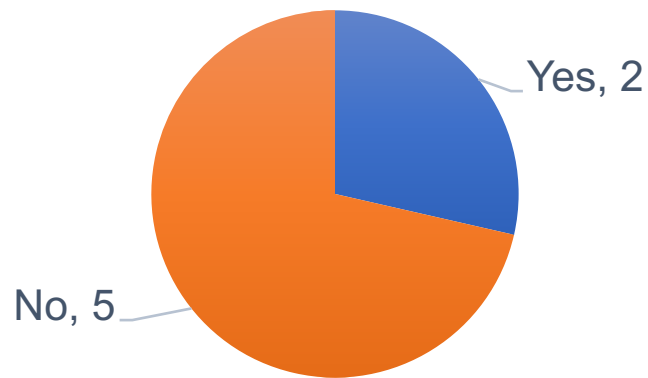
- Experimental area w/ distancing and PPE.
- Close contact w/ PPE, < 5 min.
- Close contact w/ PPE, < 30 min.



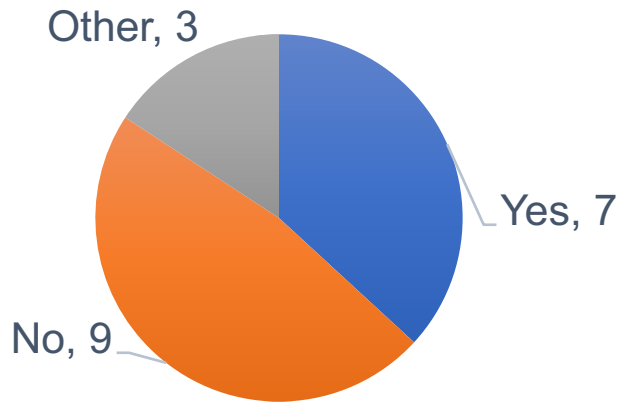
# Impact on Theses

- Gauge COVID-19 shutdown of TRIUMF and impact on thesis advancement
- More pressing issue for students than postdocs

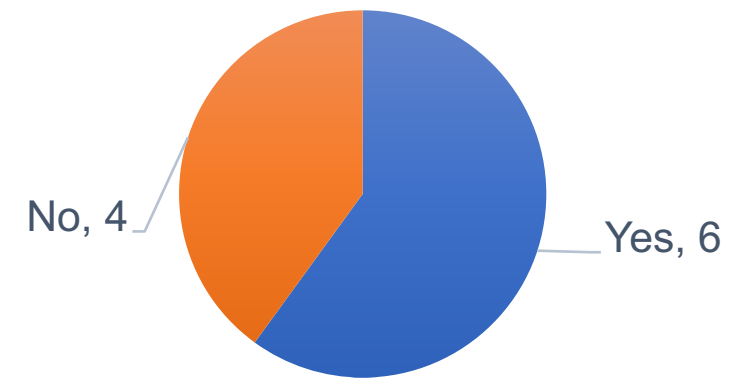
Masters



Early PhD



Late PhD



# Summary

- Comfortability of grads and postdocs returning to work overall positive
- 50-50 split on significant impact on student thesis advancement
- GAPS Members: reach us at [gaps@triumf.ca](mailto:gaps@triumf.ca) for support or problems

Thank you  
Merci

[dyates@triumf.ca](mailto:dyates@triumf.ca)

[gaps@triumf.ca](mailto:gaps@triumf.ca)

[www.triumf.ca](http://www.triumf.ca)

Follow us @TRIUMFLab

